

FLOOR FRAME LAYOUT

Trustech SA Pty Ltd

ABN: 40 1 318 22 140 16 High Street Dry Creek SA 5094 Ph: 08 8260 6006



OAKRIDGE
BUILDING SERVICES

Ph : 83637222
Fax : 83637225

STRUT HANGER 180x180x90 SUPPORTING
NORMAL FLOOR LOADS - FIXING DETAIL

FLOOR TRUSSES: MULTINAL S1400 @ 600 cts GENERALLY UNO
WET AREA TRUSSES: MULTINAL S1355 @ 600 cts GENERALLY UNO
FLOORING: 22mm Structa floor
18mm COMPRESSED SHEET TO W/A
LEDGER PLATE: 120x35 MGP10 TO ENDS

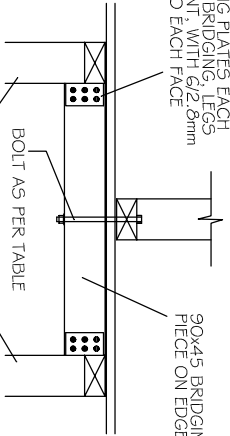
1/8" = 150 x 150 x 10 EA @ 300mm LONG
WITH 2/M 16 BOLTS & 40mm
SQUARE WASHERS TO EACH SIDE

ALL MATERIALS ALLOWED AS PER AS 1684.2-2010
TRUSSES & BRACING TO BE INSTALLED, ERECTED
& BRACED IN ACCORDANCE WITH AS4440-2004
NOTE: TRUSSES & JOISTS TO BE POSITIONED
DIRECTLY OVER STUDS
UNLESS SHOWN OTHERWISE ON LAYOUT, NO
SPECIAL LOADS HAVE BEEN ALLOWED.
EG - SPA BATHS, HOT WATER SYSTEMS ETC.

WET AREA DETAILS
THE WET AREA SHEET FLOORING MUST BE LAID IN
STRICT ACCORDANCE WITH THE RECOMMENDATIONS
BY JAMES HARDIE. REFER TO THE BATHROOM
COMPRESSED SHEET DETAILS.
* FLOOR TRUSSES fixed to bearers using
STRUT HANGER 180x180x90 throughout
* Allow timber plate or rail for floor truss to steel beam connectors
X = INTERNAL SUPPORT/CANTILEVER POINT

BOTTOM PLATE FIXING DETAILS

2 NAILING PLATES EACH
END OF BRIDGING, LEGS
NOT BENT, WITH 6/2.0mm
NAILS TO EACH FACE



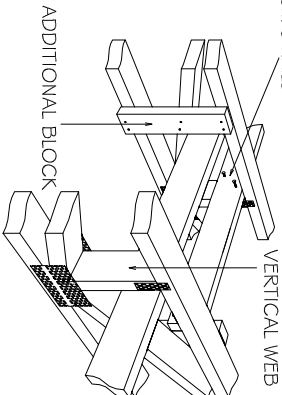
M10 BOLT - 12 kN M12 BOLT - 15 kN

NO. OF NAILS PER WING	FLOOR TRUSSES SPAN (mm)
4 NAILS	2500
6 NAILS	3900
8 NAILS	5000
10 NAILS	6400
12 NAILS	7700

STRONGBACK

NON-ALIGNED STRONGBACKS
600mm MAX APART

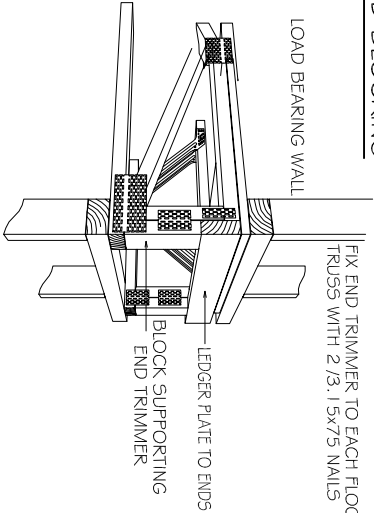
2 / 3.15x75 NAILS



ADDITIONAL BLOCK

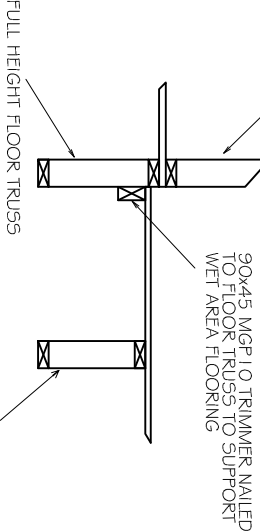
END BLOCKING

FIX END TRIMMER TO EACH FLOOR
TRUSS WITH 2 / 3.15x75 NAILS

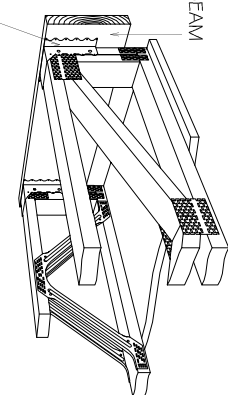
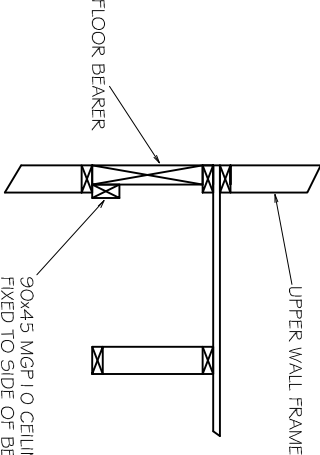


WET AREA SET DOWN LEDGER DETAIL

UPPER WALL FRAME

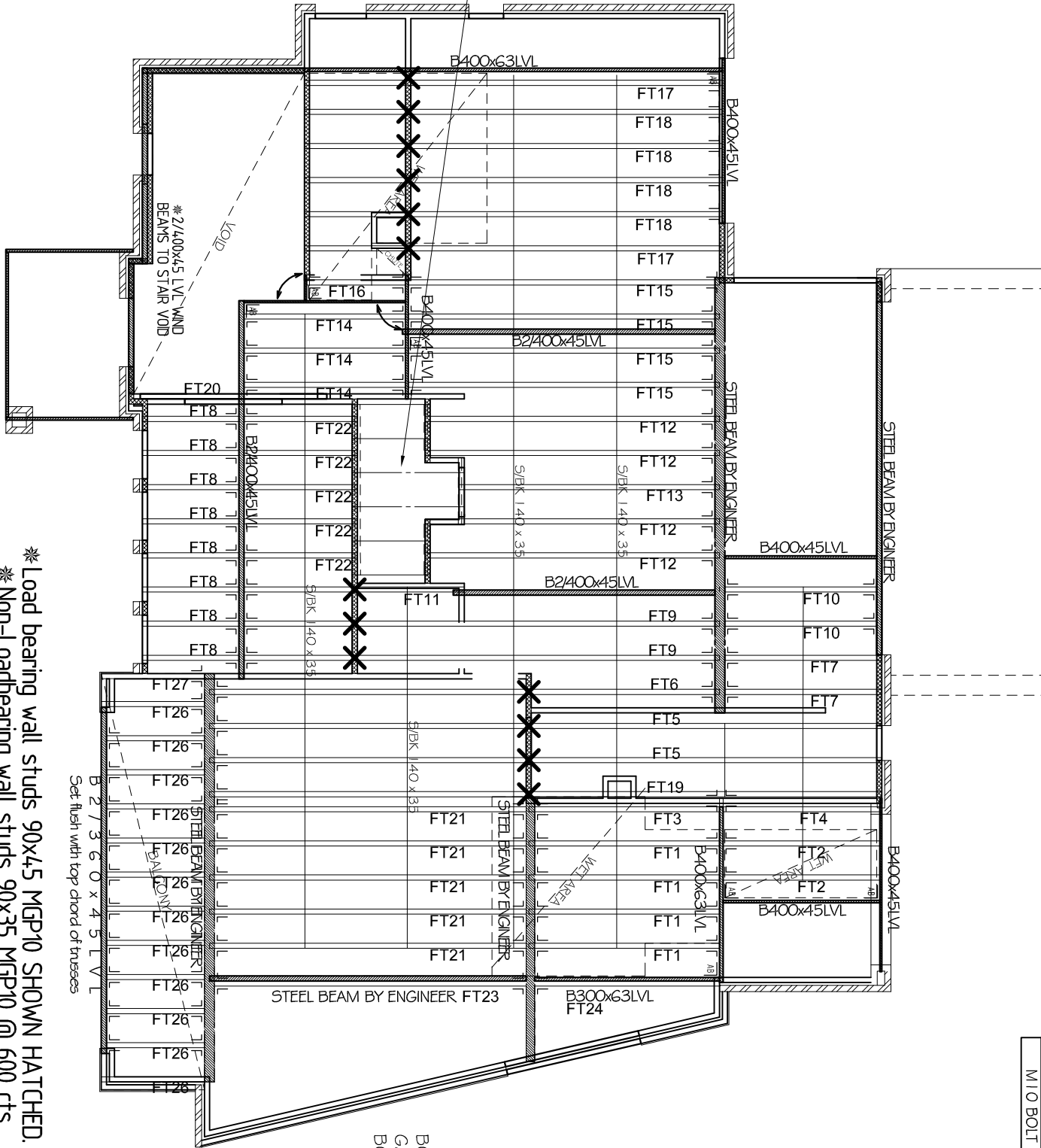


FLOOR BEARER CEILING TRIMMER DETAIL



MIN 4/30x2.0mm NAILS REFER TO TABLE BELOW

* Load bearing wall studs 90x45 MGP10 SHOWN HATCHED.
* Non-Loadbearing wall studs 90x35 MGP10 @ 600 cts
* External load bearing wall studs 90x35 MGP10 @ 600 cts
where carrying no floor load



FLOOR JOISTS : 200 x 45LVL @
600 cts GENERALLY UNO
Fixed via 140 x 45 MGP10 WALL
PLATE SET TO TOP OF TRUSSES
Joists Designed to carry up to
200kg/m² FOR AC LOADING
BLOCKING CONTINUOUS TO ENDS.

B 2 / 3 6 0 x 4 5 L V L
Set flush with top chord of trusses

SPECIFICATIONS:

Structure:	House	Joist Type:	Span/Joist	Spacing:	600
Flooring:	22mm Structa floor	Dist. Live Load:			1.50
Floor Appl:	General Areas	Flooring Size:	1800x600x75	Concret. Point Load:	1.80
Wind Speed:	N2	Ceiling:	Plaster 10mm Supa Span	Timber	Dry Timber

ALEX NENASHEFF
44 LAMBERT AVE WEST LAKES SHORE SA 5020 AUS

Detailer: Matt Opie

Signed:

Page: 3/6

Date: 27/04/2018

Scale: 1 : 100

Job No: TT09568

S:\OAKRIDGE TAKEOFFS\OTHERS\44 LAMBERT AVE\44 LAMBERT.dwg